



# CONSTRUCTION HISTORY

It's San Jacinto's  
fault...literally.

# 1996

In an attempt to replace North Hall, it is discovered that the San Jacinto fault runs through the San Bernardino Valley College campus.

Seven buildings are compromised and must be replaced because of the 200-foot wide fault zone:

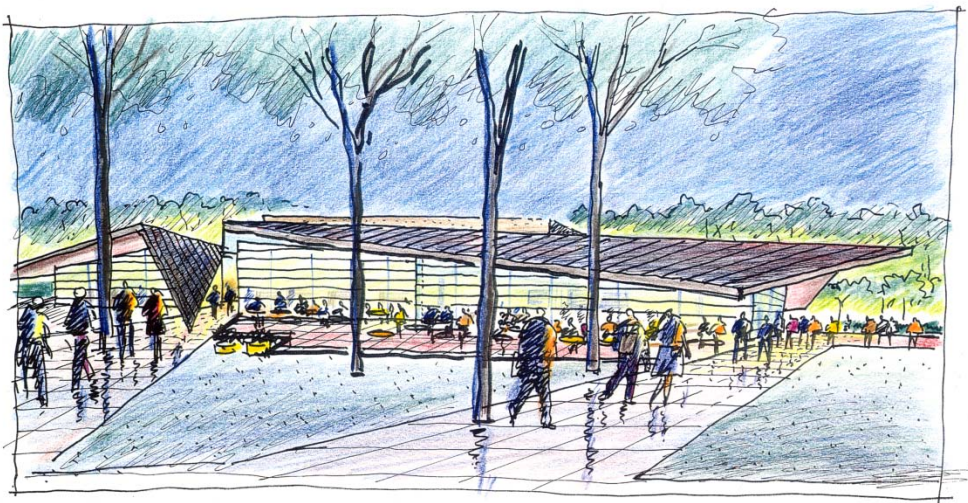
- Administration
- Library
- Life Science
- Campus Center
- Art Gallery
- Art Building
- Medical Arts



FEMA allocates \$34 million to demolish the 7 buildings and construct 5 new buildings. The state also kicks in \$11 million, plus another \$6.7 for seismic upgrades.

New buildings:

- Library
- Health/Life Science
- Administration/Student Services
- Campus Center
- Art Center/Art Gallery



*Campus Center*

Steven Erlich Architects and Thomas Blurock Architects are chosen to design the new buildings.

# 2002

- Construction begins at SBVC, with the groundbreaking for the Library as the first new building.
- District pursues general obligation bond to help offset construction costs at SBVC. Measure P, \$190 million general obligation bond, passes in November 2002.
- Citizens' Bond Oversight Committee is created.

# 2003

## Measure P

- May 15—First allocation of \$50 million. Almost all of that is dedicated to SBVC.

Total SBVC Seismic Mitigation project ends up over \$90 million:

- FEMA/Federal funds: \$34 million
- State/local funds: \$14 million
- Measure P funds: \$42 million

# 2004

## Measure P

- February 26—Second allocation of \$20 million.
- Second allocation is dedicated to Crafton Hills College projects, including energy updates, scheduled maintenance and master planning.
- Steinberg Architects selected for CHC master planning.

# 2004

- Measure P is refinanced, bringing an additional \$7 million for construction projects and reducing the tax liability of our constituents.
- The SBVC Library/Learning Resources Center opens in September.



# 2005

- SBVC Health & Life Sciences and Administration/Student Services buildings are dedicated on May 13, 2005.
- Demolition begins on SBVC “Classics.”
- CHC 20-year Master Plan developed with complete campus participation.





# 2005

- State approves three new building for SBVC:
  - North Hall Replacement
  - Physical Science
  - Media/Communications (will house KVCR)and one building for CHC:
  - Learning Resource Center

Plus, an agreement is signed with the City of Yucaipa for the community recreation center/swimming pool.

# 2006

- SBVC Campus Center dedicated on May 3, 2006.
- Jerry Lewis Emergency Training Center opens in June. Partially funded by Measure P funds (\$150,000), but mostly with federal grants, the Center provides training for fire fighting personnel nationwide.
- September 13—Third issue of Measure P (\$100 million).
- Valley College completes its master planning, also with Steinberg Architects.

Total issue of Measure P is \$170 million to date. \$20 million left to draw.



# 2007

- SBVC Art Center & Art Gallery are completed in April.
- SBVC Child Development Center completed in May.
- Donald F. Averill Applied Technologies Training Center dedicated in October. ATTC is funded by grant from EDA and HUD, plus Measure P.



# 2007

- Master planning for both colleges is completed through 2025.



**Crafton Hills College**



**San Bernardino Valley College**

# 2008

- District pursues another general obligation bond to address master planning at both campuses.
- Measure M (\$500 million) passes in February 2008 with 66.5% of the vote.
- Board of Trustees must accept certification of voter results and appoint an Oversight Committee within 60 days.
- Citizens' Bond Oversight Committee will be combined with Measure P.



# CURRENT CONSTRUCTION PROJECTS (Measure P)

## SBVC

- Student Health Services
- Media Hall
- M&O Bldg.
- Science Bldg.
- North Hall Replacement

## CHC

- Infrastructure Projects
- Learning Resources Center
- Community Recreation Facility

# Construction Project: San Bernardino Valley College

## Student Health Services

The Student Health Services project consists of a new modular building, parking area, and landscaping. The structure will house Student Health Services and include private exam rooms, treatment rooms, and offices.



### Project Budgets

- ❖ Budget: \$1,500.000

### Project Facts

- ❖ Curriculum/Use: Student Health Services
- ❖ 2,400 GSF (gross square feet)

### Schedule

- ❖ Start Construction – 11/20/07
- ❖ Construction Completion – 6/10/08
- ❖ Project Closeout – 7/10/08

### Program Manager

- ❖ Kitchell CEM

### Architects

- ❖ IBI Group

### Construction Managers

- ❖ Kitchell CEM

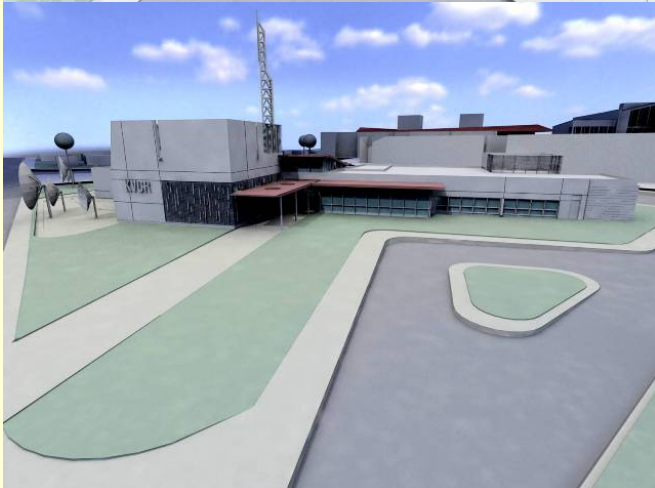
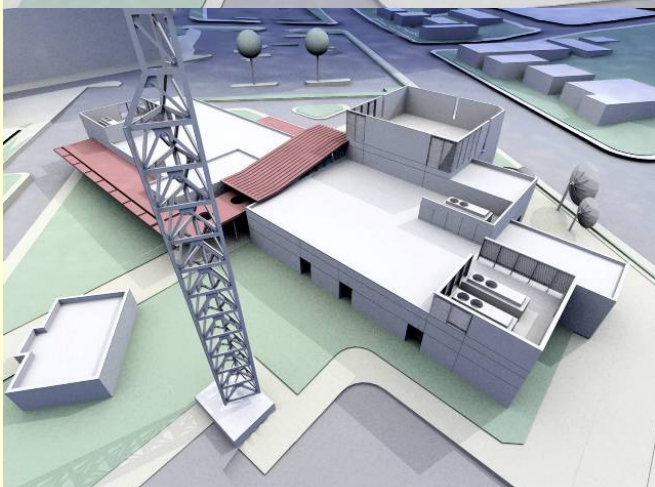
### Funding

- ❖ Measure P Bond

## Construction Project: San Bernardino Valley College

### Media/Communications Building

The Media/Communications Building is comprised of constructing a single new building, site utilities /infrastructure, landscaping, site paving. The new construction will be a media broadcasting center (KVCR), as well as education building which includes studios, program stage areas, assembly area, meeting rooms, library/tutoring rooms, and offices



#### Project Budgets

- ❖ Budget \$11,676.000

#### Project Facts

- ❖ Curriculum/Use: Curriculum/Use: Radio-Television-Film, KVCR and RTVF
- ❖ 18,020 GSF (gross square feet)
- ❖ 12,000 ASF (assignable square feet)

#### Schedule

- ❖ Schematic design – 2/23/07
- ❖ Design documents – 4/16/07
- ❖ Construction documents – 11/16/07
- ❖ Start Construction – 07/01/08
- ❖ Project Closeout – 09/08/09

#### Program Manager

- ❖ Kitchell/BRJ

#### Architects

- ❖ NTD Architecture

#### Construction Managers

- ❖ Tilden-Coil Constructors

#### Funding

- ❖ Measure P Bond
- ❖ State and Local Funds



## Construction Project: San Bernardino Valley College

### Maintenance and Operations Replacement Building

Maintenance and Operations (M&O) comprised of constructing a single new building, site utilities/infrastructure, landscaping, site paving, and demolishing the current Maintenance and Operations building. Also included in this project is a smaller new building (M&O Custodial) to an area opposite the Child Development Center at "K" St. North of Grant Ave. with custodial, shop and office space sufficient to accommodate M&O's current needs. Both buildings will be CMU walls with open-web steel frame trusses and built-up flat roofs.



#### Project Budgets

- ❖ Budget \$2,508,000

#### Project Facts

- ❖ Curriculum/Use: Two buildings:  
Building 1: Custodial  
Building 2: Maintenance & Operations
- ❖ 14,811 GSF (gross square feet)
- ❖ 11,985 ASF (assignable square feet)

#### Schedule

- ❖ Schematic design – 2/23/07
- ❖ Design documents – 4/16/07
- ❖ Construction documents – 9/14/07
- ❖ Start Construction – 6/10/08
- ❖ Project Closeout – 10/20/08

#### Program Manager

- ❖ Kitchell/BRJ

#### Architects

- ❖ NTD Architecture

#### Construction Managers

- ❖ Tilden-Coil Constructors

#### Funding

- ❖ Measure P Bond

# Construction Project: San Bernardino Valley College

## Science Building

The Science Building Project is comprised of constructing a single new building, site utilities/infrastructure, landscaping, site paving, and demolishing the current Physical Science and Chemistry buildings. The new construction will be an inclusive science education building which includes lecture halls, classrooms, laboratories, special study areas for various subjects, and offices.



### Project Budgets

- ❖ Budget \$38,594,000

### Project Facts

- ❖ Curriculum/Use: Math, Physical Sciences, Chemistry, Physics, Architecture, Campus IT
- ❖ 56,750 GSF (gross square feet)
- ❖ 38,080 ASF (assignable square feet)

### Schedule

- ❖ Schematic design – 2/23/07
- ❖ Design documents – 4/16/07
- ❖ Construction Documents – 11/16/07
- ❖ Start Construction – 11/19/08
- ❖ Project Closeout – 11/03/10

### Program Manager

- ❖ Kitchell/BRJ

### Architects

- ❖ NTD Architecture

### Construction Managers

- ❖ Tilden-Coil Contractors

### Funding

- ❖ Measure P Bond
- ❖ State and Local Funds

# Construction Project: San Bernardino Valley College

## North Hall Replacement Building

North Hall Replacement Project is comprised of constructing a building to replace the current North Hall, the demolishing of the existing North Hall Building, Maintenance/Operations Building and KVCR/RTVF studios, site utilities, landscaping and paving. The new construction will be a general education building which includes classrooms, special study areas for various subjects and offices.



### Project Budgets

- ❖ Budget \$25,945,000

### Project Facts

- ❖ Curriculum/Use: Criminal Justice, Music, Social Science, Speech/Language and Consumer Science
- ❖ 50,934 GSF (gross square feet)
- ❖ 33,084 ASF (assignable square feet)

### Schedule

- ❖ Schematic design – 2/23/07
- ❖ Design documents – 4/16/07
- ❖ Construction documents – 11/16/07
- ❖ Start Construction – 6/20/08
- ❖ Project Closeout – 2/08/10

### Program Manager

- ❖ Kitchell/BRJ

### Architects

- ❖ NTD Architecture

### Construction Managers

- ❖ Tilden-Coil Contractors

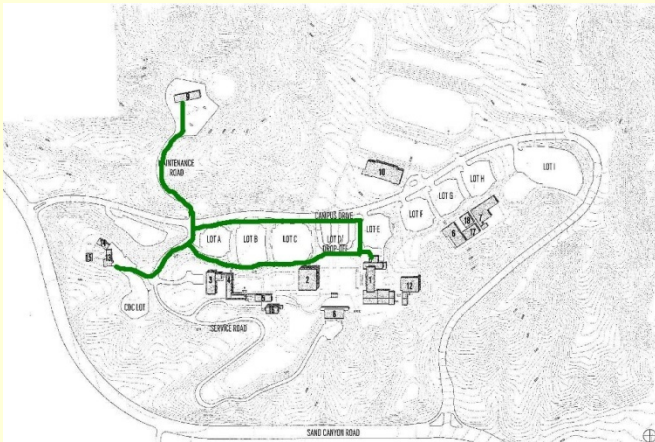
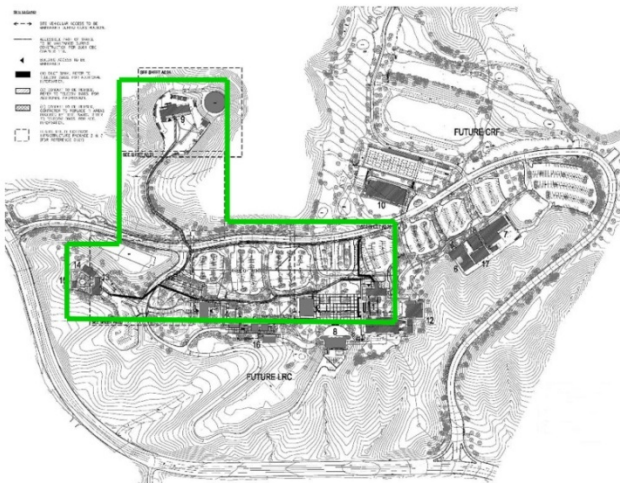
### Funding

- ❖ Measure P Bond
- ❖ State and Local Funds

# Construction Project: Crafton Hills College

## Infrastructure Package #1

Infrastructure Package #1 consists of relocating Verizon incoming services for cabling & equipment. The scope of work includes the following: Verizon cabling & equipment relocation, Campus communications, Landscape/Hardscape patch and repair. The revised Verizon route will use the existing communication manholes along Campus Drive and Verizon equipment will be relocated to the LADM MPOE location. CDC and M & O communications will be relocated & CHC campus fire alarm cabling will be relocated as well.



### Project Budgets

- ❖ Budget \$1,198,121

### Project Facts

- ❖ Communications Relocation

### Schedule

- ❖ Construction documents – 7/24/07
- ❖ Start Construction – 11/26/07
- ❖ Project Closeout – 4/3/08

### Program Manager

- ❖ Kitchell/BRJ

### Architects

- ❖ Steinberg Architects

### Construction Managers

- ❖ Tilden-Coil Contractors

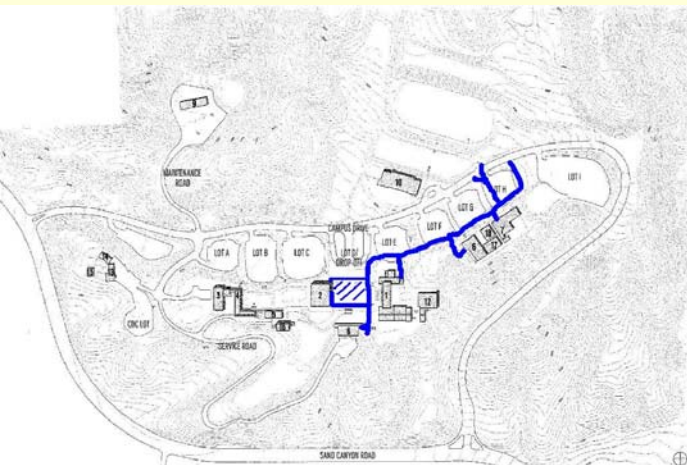
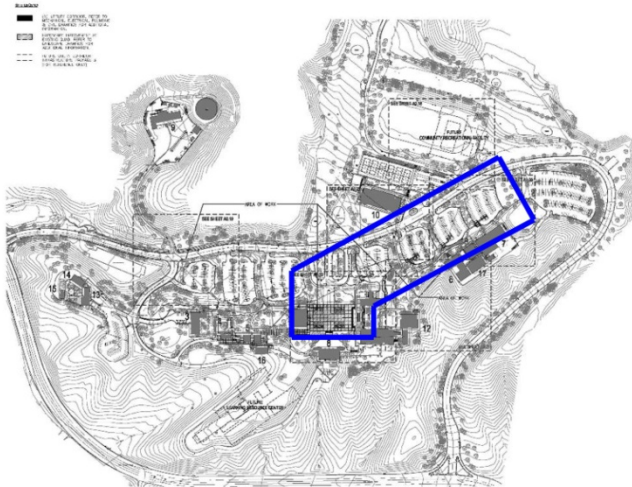
### Funding

- ❖ Measure P Bond
- ❖ Local Funds

# Construction Project: Crafton Hills College

## Infrastructure Package #2

Infrastructure Package #2 consists of the development of the utility corridor from the central quad to buildings on the east end of campus and includes: New gas piping Water distribution main for regular use and for fire protection, Central plant remodeling and new underground chilled water and heating water, Electrical service provisions for the future student center and emergency services. Extend and update the communication backbone duct bank and service provisions for LADM and PAC , Landscape/Hardscape patch and repair



### Project Budgets

- ❖ Budget: \$4,988,310

### Project Facts

- ❖ Utility Corridor

### Schedule

- ❖ Schematic Design – 2/23/07
- ❖ Design Documents – 2/23/07
- ❖ Construction Documents – 9/21/07
- ❖ Start Construction – 7/7/08
- ❖ Project Closeout – 8/28/09

### Program Manager

- ❖ Kitchell/BRJ

### Architects

- ❖ Steinberg Architects

### Construction Managers

- ❖ Tilden-Coil Contractors

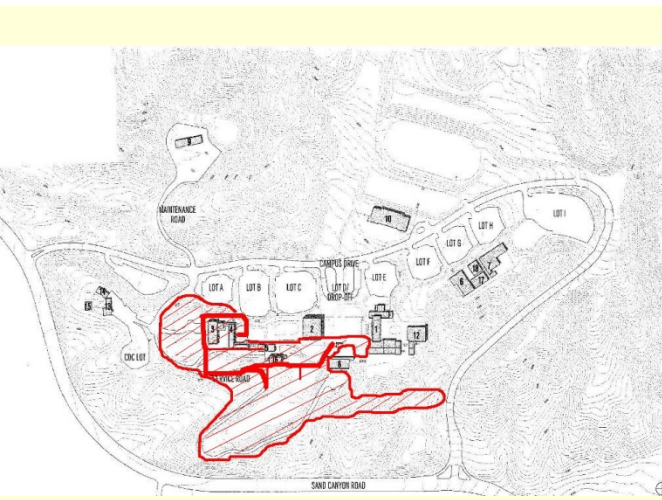
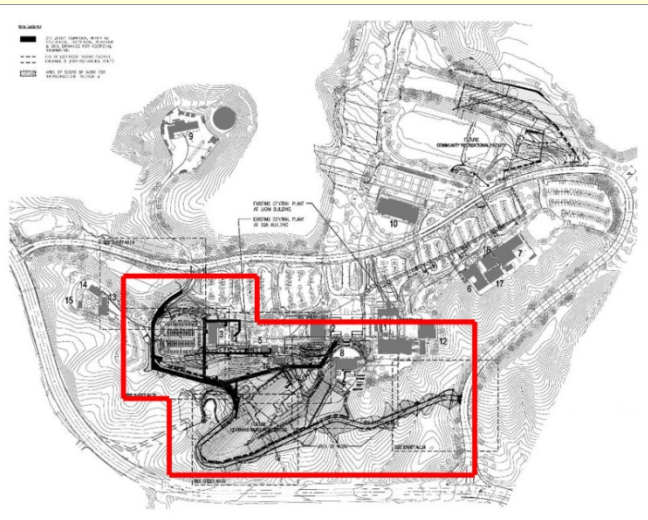
### Funding

- ❖ Measure P Bond
- ❖ Local Funds

# Construction Project: Crafton Hills College

## Infrastructure Package #3

Infrastructure Package #3 can be divided in three areas: Peninsula service road extension that will connect the existing peninsula service road with Campus Drive. The scope of work includes grading, storm drainage, road construction, road lighting, irrigation and landscape. Peninsula service road upgrades and utility corridor construction for peninsula. The scope of work includes grading, gas, sewer, CHW/HHW, domestic water, power, communication, irrigation, widening of peninsula service road to PAC, road lighting, hardscape, and landscape. Grading for parking lot west of cafeteria (future location of parking structure) and utility corridor construction from central quad to buildings on west end of campus. The scope of work includes grading, gas, CHW/HHW, domestic water, power, communication, irrigation, landscape and site lighting



### Project Budgets

- ❖ Budget: \$16,355,008

### Project Facts

- ❖ Peninsula Development & Access Road

### Schedule

- ❖ Schematic Design – 5/11/07
- ❖ Design Documents – 5/11/07
- ❖ Construction Documents – 9/21/07
- ❖ Start Construction – 7/7/08
- ❖ Project Closeout – 8/28/09

### Program Manager

- ❖ Kitchell/BRJ

### Architects

- ❖ Steinberg Architects

### Construction Managers

- ❖ Tilden-Coil Contractors

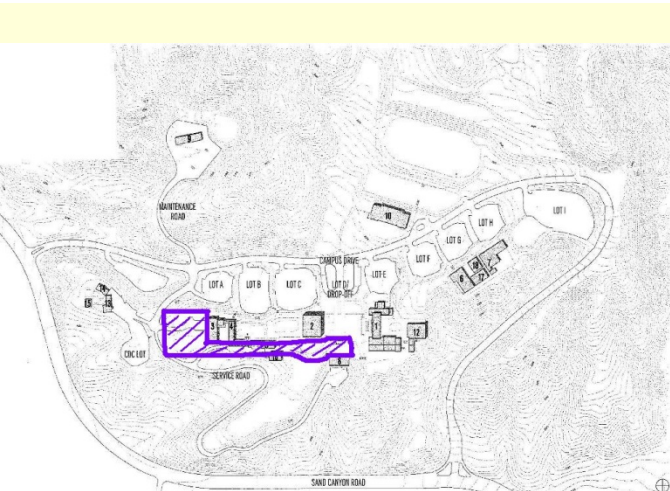
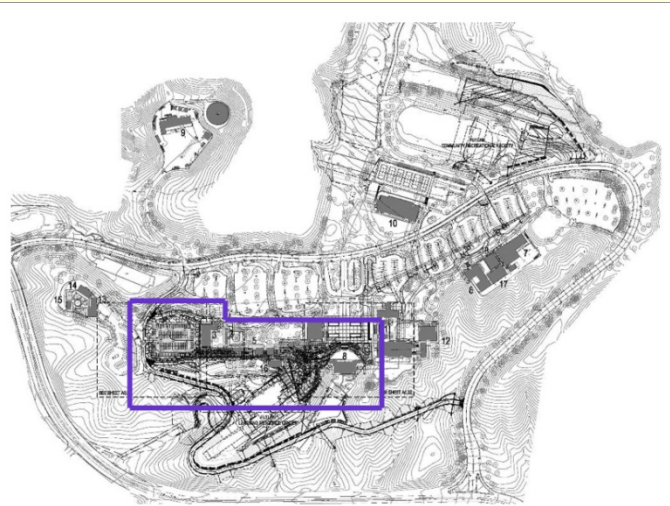
### Funding

- ❖ Measure P Bond
- ❖ Local Funds

# Construction Project: Crafton Hills College

## Infrastructure Package #4

Infrastructure Package #4 consists of DSA accessibility development of the proposed accessible path of travel crossing the campus and stretching from the new parking lot west of cafeteria (future location of parking structure) to the central quad / PAC and includes: College center service access, Hardscape / Fire access, Pedestrian ramp / stair, Landscape, Sidewalk, Pedestrian lighting, Signage, Parking lot paving



### Project Budgets

- ❖ Budget: \$4,664,945

### Project Facts

- ❖ DSA Accessibility Component:

### Schedule

- ❖ Schematic Design – 4/13/07
- ❖ Design Documents – 4/13/07
- ❖ Construction Documents – 8/17/07
- ❖ Start Construction – 7/7/08
- ❖ Project Closeout – 8/28/09

### Program Manager

- ❖ Kitchell/BRJ

### Architects

- ❖ Steinberg Architects

### Construction Managers

- ❖ Tilden-Coil Contractors

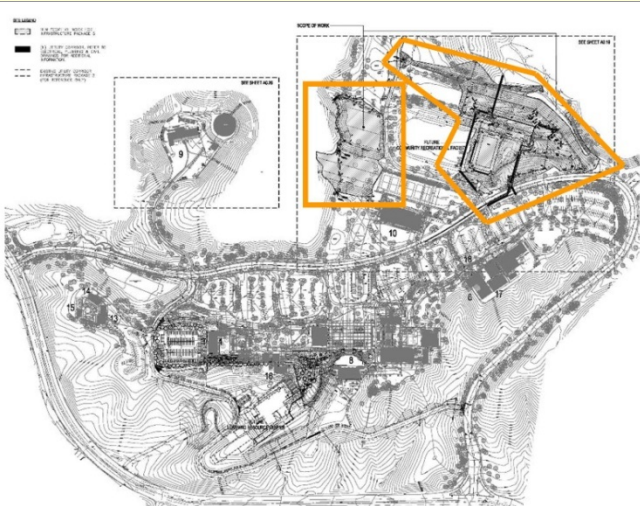
### Funding

- ❖ Measure P Bond
- ❖ Local Funds

# Construction Project: Crafton Hills College

## Infrastructure Package #5

Infrastructure Package #5 consists of the earthwork & rough grading, and the underground utilities in preparation for the Community Recreation Facility Project and related site modifications at the adjacent athletic fields.



### Project Budgets

- ❖ Budget: \$5,628,353

### Project Facts

- ❖ Athletic, Community Recreational Area

### Schedule

- ❖ Schematic Design – 5/16/07
- ❖ Design Documents – 5/16/07
- ❖ Construction Documents – 12/28/07
- ❖ Start Construction – 9/5/08
- ❖ Project Closeout – 2/19/09

### Program Manager

- ❖ Kitchell/BRJ

### Architects

- ❖ Steinberg Architects

### Construction Managers

- ❖ Tilden-Coil Contractors

### Funding

- ❖ Measure P Bond
- ❖ Local Funds



## Construction Project: Crafton Hills College

### Learning Resource Center

The Learning Resource Center building will house functions located in the current Library/LRC, which include the Library, the Learning Center, and the Campus Data Center. The new LRC will allow for the expansion of all of these functions, as well as the accommodations of more varied programs and functions such as distributed learning, electronic commons, audiovisual learning activities and services, individual and group study areas, teleconferencing, staff development and office and work areas for support services. The new LRC will become the central hub for the college's technology and audiovisual services and support. In addition to facilities that serve primarily the students or the faculty, this facility will house a variety of spaces that can be utilized also by the community. Those spaces are: a 100-seat auditorium, an Art Gallery, a multi-purpose Room, and a Copy Center.



#### Project Budgets

- ❖ Budget: \$34,749,788

#### Project Facts

- ❖ Curriculum/Use: Library, Technical Support, Print Shop, & Lecture Hall
- ❖ 58,824 GSF (gross square feet)
- ❖ 40,000 ASF (assignable square feet)

#### Schedule

- ❖ Schematic Design – 3/9/07
- ❖ Design Documents – 6/15/07
- ❖ Construction Documents – 11/9/07
- ❖ Start Construction – 10/3/08
- ❖ Project Closeout – 3/18/10

#### Program Manager

- ❖ Kitchell/BRJ

#### Architects

- ❖ Steinberg Architects

#### Construction Managers

- ❖ Tilden-Coil Contractors

#### Funding

- ❖ Measure P Bond
- ❖ State and Local Funds

## Construction Project: Crafton Hills College

### Community Recreation Facility

The Community Recreation Facility (CRF), also known as the Natatorium building in the Master Plan, is intended to provide a quality environment for learning and competition swimming. The facility consists of a CRF building, a 50 meter pool and surrounding site development. The CRF building is intended to house lockers, showers, offices, storage, multi-purpose room, pool mechanical room and related spaces. The swimming pool will be sized as a competition pool, 50 meter X 25 yards and will have bleachers for the public. Site development includes parking lot, landscaping and building access



#### Project Budgets

- ❖ Budget: \$12,526,809

#### Project Facts

- ❖ Curriculum/Use: Olympic Pool, Locker Facilities, & Teaching Stations

#### Schedule

- ❖ Schematic Design – 10/19/07
- ❖ Design Documents – 10/19/07
- ❖ Construction Documents – 2/1/08
- ❖ Start Construction – 10/31/08
- ❖ Project Closeout – 8/20/09

#### Program Manager

- ❖ Kitchell/BRJ

#### Architects

- ❖ Steinberg Architects

#### Construction Managers

- ❖ Tilden-Coil Contractors

#### Funding

- ❖ Measure P Bond

# Thank You!



---

San Bernardino

---

**Valley College**